

**AMPH Antibody (Center)**  
**Purified Rabbit Polyclonal Antibody (Pab)**  
**Catalog # AP21189c****Specification**

---

**AMPH Antibody (Center) - Product Information**

Application	WB, IHC-P,E
Primary Accession	<a href="#">P49418</a>
Reactivity	Human
Host	Rabbit
Clonality	polyclonal
Isotype	Rabbit IgG
Calculated MW	76257

**AMPH Antibody (Center) - Additional Information****Gene ID** 273**Other Names**

Amphiphysin, AMPH, AMPH1

**Target/Specificity**

This AMPH antibody is generated from a rabbit immunized with a KLH conjugated synthetic peptide between 336-370 amino acids from the Central region of human AMPH.

**Dilution**

WB~~1:1000

IHC-P~~1:25

E~~Use at an assay dependent concentration.

**Format**

Purified polyclonal antibody supplied in PBS with 0.09% (W/V) sodium azide. This antibody is purified through a protein A column, followed by peptide affinity purification.

**Storage**

Maintain refrigerated at 2-8°C for up to 2 weeks. For long term storage store at -20°C in small aliquots to prevent freeze-thaw cycles.

**Precautions**

AMPH Antibody (Center) is for research use only and not for use in diagnostic or therapeutic procedures.

**AMPH Antibody (Center) - Protein Information****Name** AMPH**Synonyms** AMPH1

**Function** May participate in mechanisms of regulated exocytosis in synapses and certain endocrine cell types. May control the properties of the membrane associated cytoskeleton.

**Cellular Location**

Cytoplasmic vesicle, secretory vesicle, synaptic vesicle membrane; Peripheral membrane protein; Cytoplasmic side Cytoplasm, cytoskeleton

**Tissue Location**

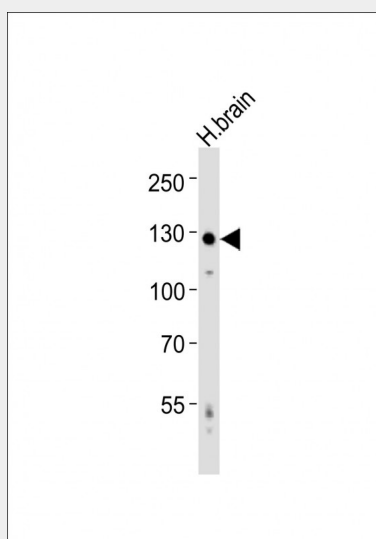
Neurons, certain endocrine cell types and spermatocytes

**AMPH Antibody (Center) - Protocols**

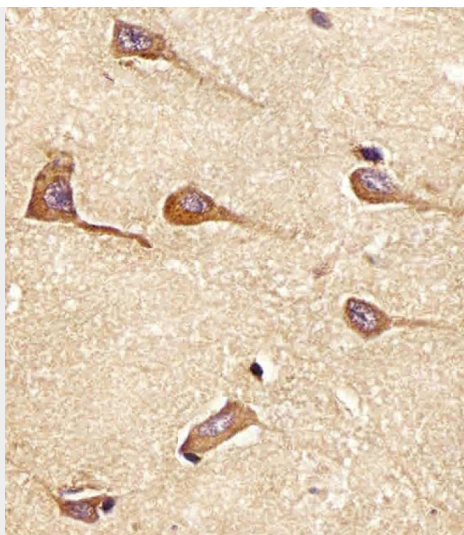
Provided below are standard protocols that you may find useful for product applications.

- [Western Blot](#)
- [Blocking Peptides](#)
- [Dot Blot](#)
- [Immunohistochemistry](#)
- [Immunofluorescence](#)
- [Immunoprecipitation](#)
- [Flow Cytometry](#)
- [Cell Culture](#)

**AMPH Antibody (Center) - Images**



Anti-AMPH Antibody (Center) at 1:1000 dilution + human brain lysates Lysates/proteins at 20 µg per lane. Secondary Goat Anti-Rabbit IgG, (H+L), Peroxidase conjugated at 1/10000 dilution Predicted band size : 76 kDa Blocking/Dilution buffer: 5% NFDM/TBST.



AP21189c staining AMPH in Human brain tissue sections by Immunohistochemistry (IHC-P - paraformaldehyde-fixed, paraffin-embedded sections). Tissue was fixed with formaldehyde and blocked with 3% BSA for 0.5 hour at room temperature; antigen retrieval was by heat mediation with a citrate buffer (pH6). Samples were incubated with primary antibody (1/25) for 1 hour at 37°C. A undiluted biotinylated goat polyvalent antibody was used as the secondary antibody.

#### **AMPH Antibody (Center) - Background**

May participate in mechanisms of regulated exocytosis in synapses and certain endocrine cell types. May control the properties of the membrane associated cytoskeleton.

#### **AMPH Antibody (Center) - References**

David C., et al. FEBS Lett. 351:73-79(1994).  
Yamamoto R., et al. Hum. Mol. Genet. 4:265-268(1995).  
Floyd S.R., et al. Mol. Med. 4:29-39(1998).  
Scherer S.W., et al. Science 300:767-772(2003).  
Mural R.J., et al. Submitted (JUL-2005) to the EMBL/GenBank/DDBJ databases.